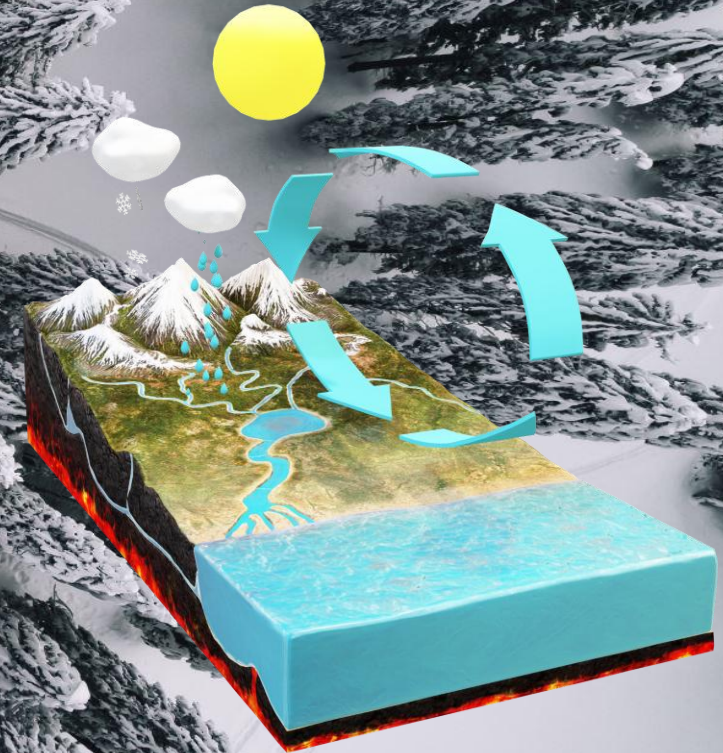


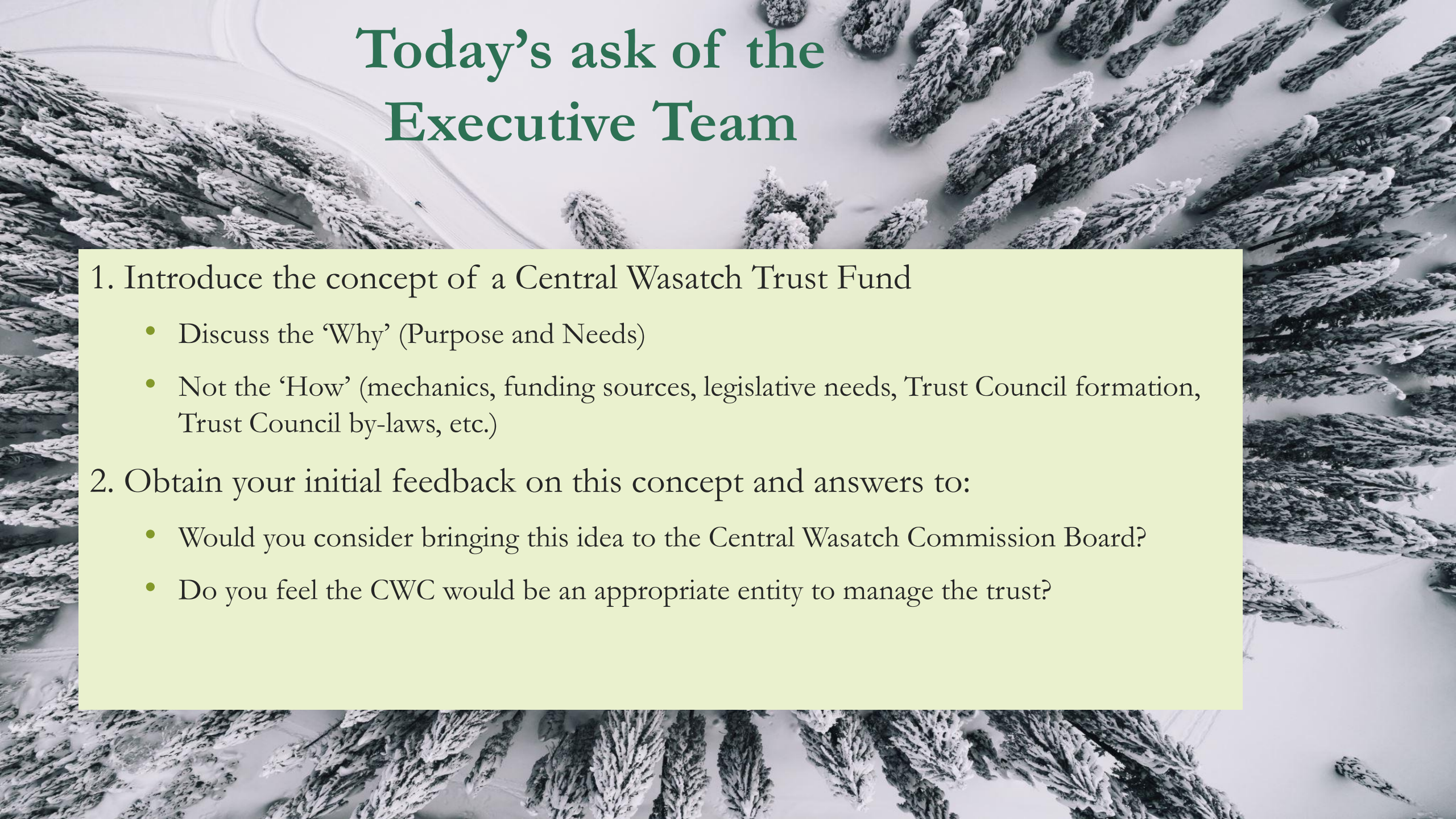
# The case for a Cottonwoods Commons Trust



**COTTONWOODS  
COMMONS  
TRUST**





An aerial photograph of a winter mountain landscape. The scene is dominated by numerous evergreen trees, likely spruce or fir, which are heavily laden with snow. The ground is a smooth, white expanse of snow, with some faint tracks or paths visible. The lighting is soft, creating a serene and cold atmosphere. The trees are scattered across the frame, with some appearing in the foreground and others receding into the distance.

# Today's ask of the Executive Team

## 1. Introduce the concept of a Central Wasatch Trust Fund

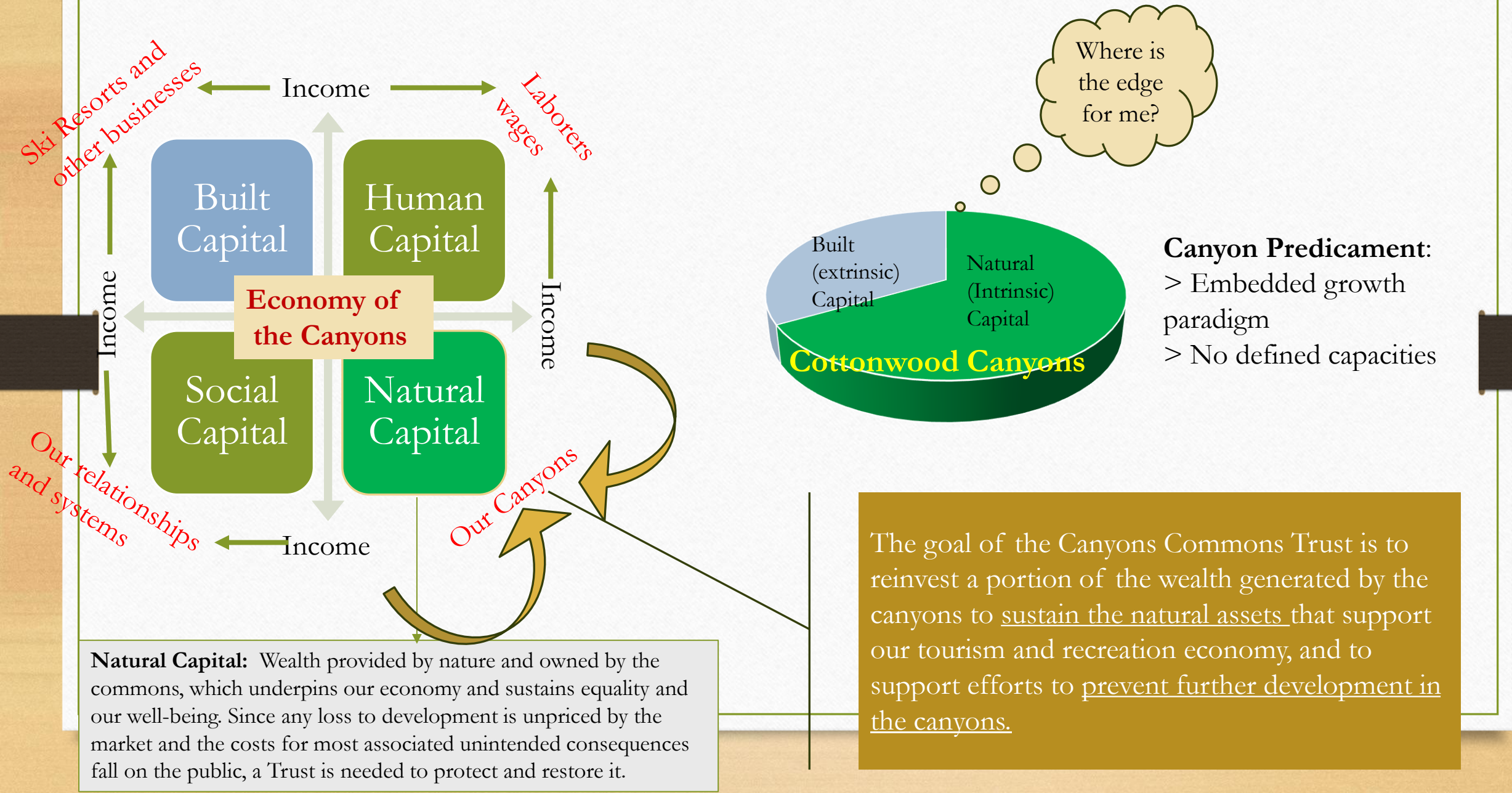
- Discuss the 'Why' (Purpose and Needs)
- Not the 'How' (mechanics, funding sources, legislative needs, Trust Council formation, Trust Council by-laws, etc.)

## 2. Obtain your initial feedback on this concept and answers to:

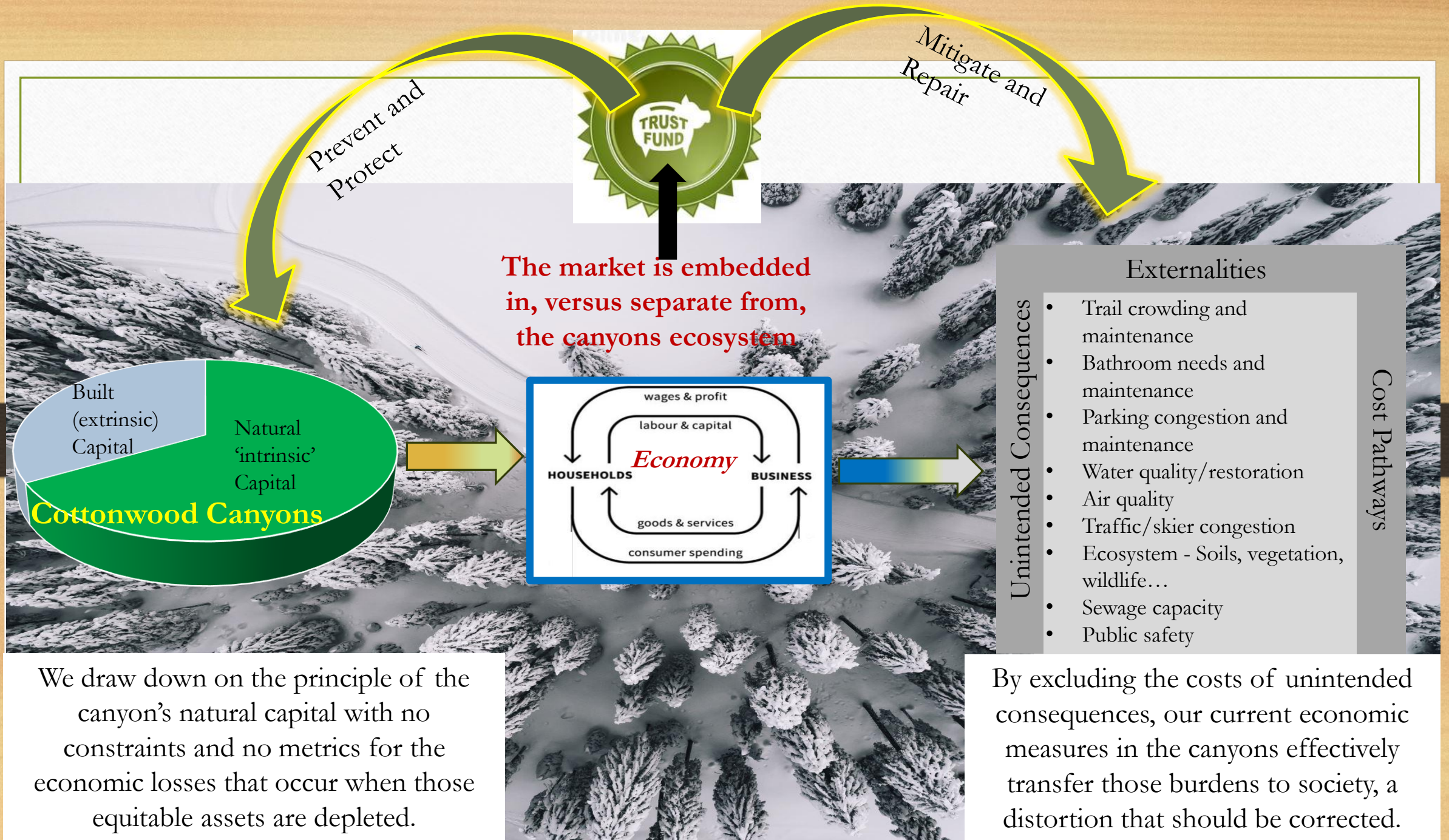
- Would you consider bringing this idea to the Central Wasatch Commission Board?
- Do you feel the CWC would be an appropriate entity to manage the trust?



# How do we align the incentives with the desired future?











**COTTONWOODS  
COMMONS  
TRUST**

## Today's ask of the Executive Team

- Would you consider bringing this idea to the Central Wasatch Commission Board?
- Do you feel the CWC would be an appropriate entity to manage the trust?